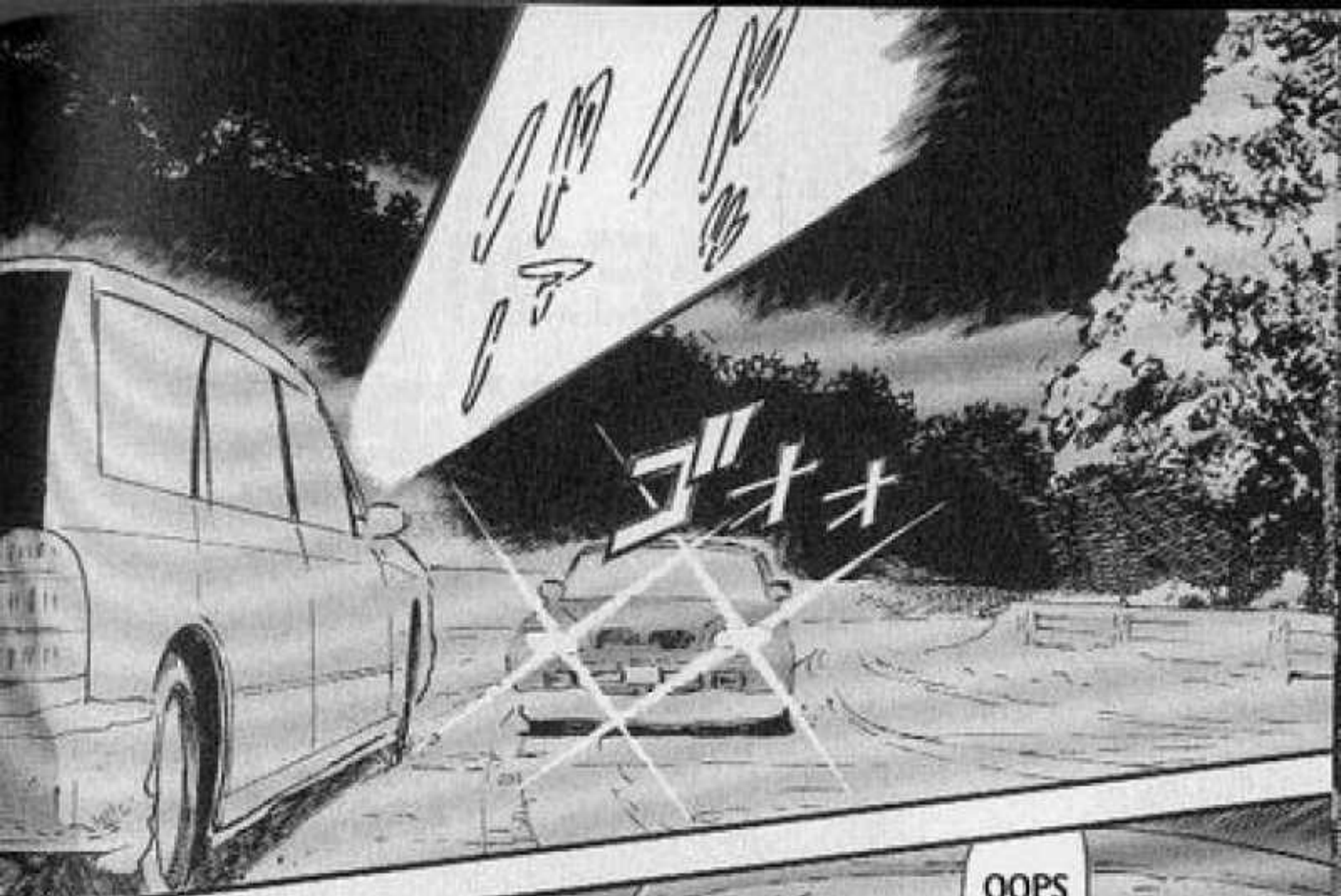


Detective CONAN

FELLOW PASSENGERS

Vol 37 - File 10







UM ...



WHA ?

SHE'S RIGHT !
YOU NEED TO DRIVE
MORE CAREFULLY
SINCE THIS CAR IS
SO TIRED BEFORE
AUTOMOBILE
INSPECTION !



NO WAY !
YOU DON'T REMEMBER ?
THE STICKER ON THE
WINDSHIELD SAID "2"!

YEA...
I SUPPOSE
...



IT'S COMING
UP SOON FOR
THIS CAR,
ISN'T IT ?



I DID GET A
REMINDER MAIL
THAT IT'S BY THE
END OF THIS
MONTH
...

OH, YES !
NOW I
REMEMBER
!!



THE COLOR IS THIS
YEAR'S SO IT'S
OBVIOUS THAT IT
SHOULD BE CHECKED
BY THIS FEBRUARY
...

DOESN'T THAT STICKER TELL
YOU WITH ITS COLOR AND
NUMBER BY WHEN YOU SHOULD
HAVE YOUR CAR CHECKED ?



SEE, THE NUMBER
APPEARS ON THE
BACKSIDE WHEN
LIGHT IS LIT
...



I SAW IT WHEN A CAR
ON THE OTHER LANE
WAS COMING
THIS WAY !

BUT, KID, WHEN DID
YOU SEE THE
STICKER? IT'S
HIDDEN BEHIND
THE SNOW
...



WHA?

I
THOUGHT
IT WAS 2
FROM THE
BACKSIDE
BUT IT
WAS
REALLY 5
!

OH,
OOPS!



THAT'S
BECAUSE
...

UMM
..

WHY
WAS
THAT
?

YOU GOT A REMINDER
MAIL FOR THE CAR
INSPECTION FOR THIS
MONTH, RIGHT ?

BUT
THAT'S
ODD
...



OH
...

TO HIM, A CAR
INSPECTION IS
NOTHING TO WORRY
ABOUT
...

I TOLD YOU. HE'S AN HEIR
TO A BIG COMPANY! HE
ALWAYS LET OTHER PEOPLE
TAKE CARE OF THINGS ...



EH ?

WE SHOULD'VE TURNED TO THE LEFT TO GET TO TOKYO ...



KEY ...

O ...



I'M SORRY ... HE'S A VERY CURIOUS CHILD ...

OH WELL... I GUESS IT CAN'T BE HELPED...



KID, STOP BUGGING ME ...

MAN ...



LIKE THE ONES ABOUT ECONOMIC RECOVERY, BASEBALL ...

YEP! THERE HAVE BEEN A LOT OF DIFFERENT KINDS !

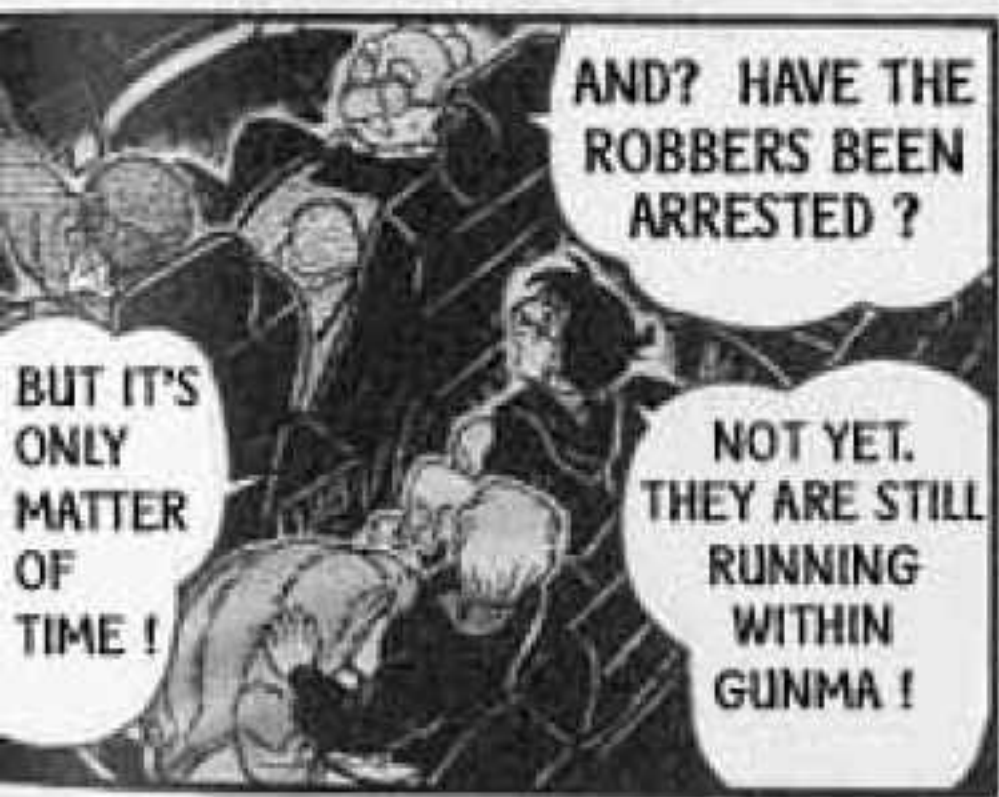
NEWS ?



IT'S NEWS ON THE RADIO !

OH, THIS ?

BY THE WAY, WHAT HAVE YOU BEEN LISTENING ?





O, OH...
IT'S YOU,
CONAN
...

YAY! IT'S
DETECTIVE
YAMAMURA
!

IN THE MOUNTAIN THEY
DROPPED OFF THE STOLEN
CAR THEY USED TO RUN
AWAY FROM THE SCENE...
DON'T THINK THEY'VE
GONE TOO FAR CONSIDER-
ING ONE IS INJURED...

THERE ARE
THREE OF
THEM
...

UH-
HUH
...

THIS CHECK-
POINT IS TO
CAPTURE THE
JEWELRY
ROBBERS,
RIGHT ?

JUST LIKE
IN THE
DETECTIVE
TV SHOW
!!

YES, THAT'S RIGHT !!
THE BULLET I FIRED TO
WARN THE ROBBERS HIT
ONE OF THEM AT THE
THIGH BY CHANCE !

INJUR
ED?



I KNOW
THEM
!

PEOPLE
RIDING ON
OTHER'S
CAR?

HAVE YOU
SEEN ANYONE
LIKE THAT
?

WE BELIEVE THE
ROBBERS HAD
EITHER PREPARED A
CAR IN THE FOREST
OR STOLE A CAR
THAT CAME BY
...

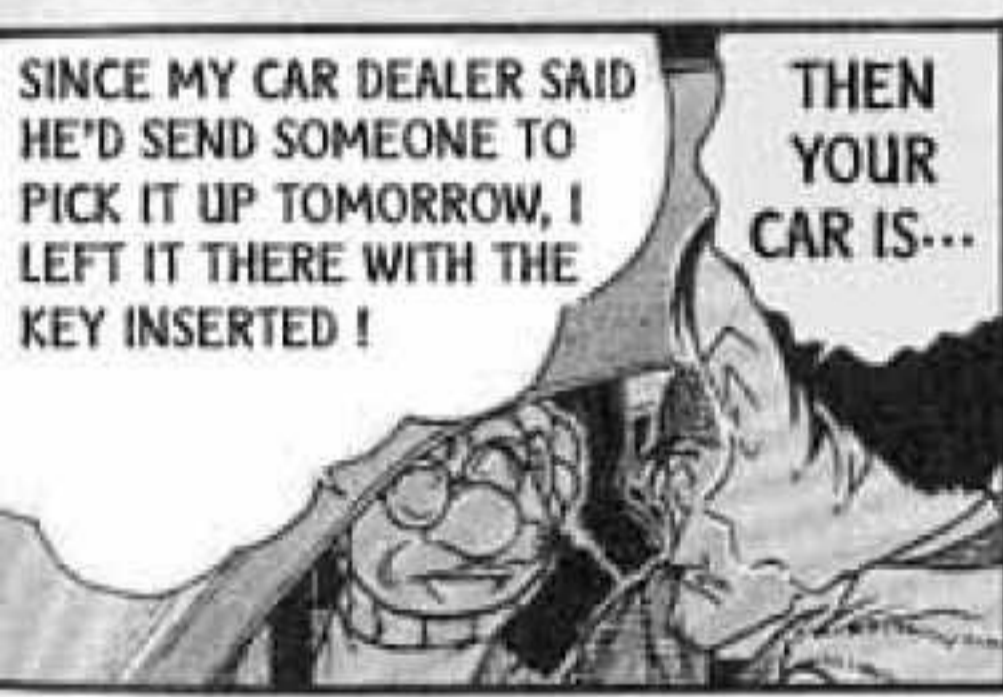
[COUGH]
ANYWAY
...





MY CAR GOT FLAT TIRES IN THE MIDDLE OF THE MOUNTAIN. THESE PEOPLE ARE KINDLY GIVING US A RIDE
...

M...
MR.
AGASA
...



SINCE MY CAR DEALER SAID HE'D SEND SOMEONE TO PICK IT UP TOMORROW, I LEFT IT THERE WITH THE KEY INSERTED !

THEN YOUR CAR IS...



HUH ?

WE ARE THE ONES !



WELL, SHOULDN'T YOU BE WATCHING THE CAR RATHER THAN TALKING WITH US LIKE THIS ?

THA... THAT'S A POSSIBILITY
...

A YELLOW BEATLE ! IT SHOULD BE EASY TO SPOT !



THOSE ROBBERS COULD BE RIDING ON YOUR CAR BY NOW ...

THEN IT'S NOT GOOD, IS IT ?

EH ?



HMM ?



C, CAN WE GO NOW ?

J, JUST YOUR IMAGINATION
...

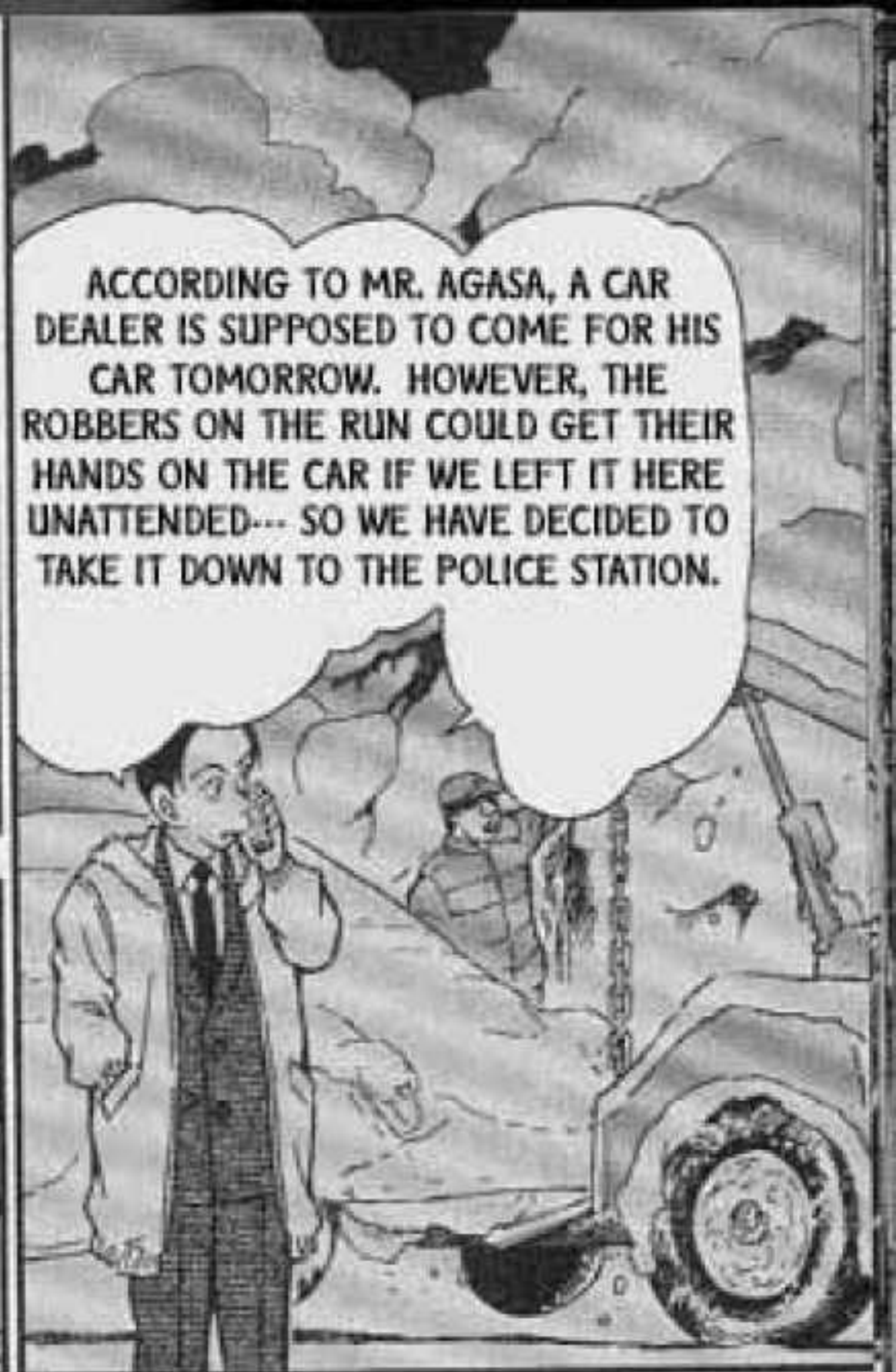
FUNNY... I FEEL LIKE I'VE HEARD OF YOUR VOICES SOMEWHERE
...





YES, SURE ...

PLEASE TELL MR. AGASA TO COME PICK IT UP DIRECTLY AT THE GPP+



ACCORDING TO MR. AGASA, A CAR DEALER IS SUPPOSED TO COME FOR HIS CAR TOMORROW. HOWEVER, THE ROBBERS ON THE RUN COULD GET THEIR HANDS ON THE CAR IF WE LEFT IT HERE UNATTENDED--- SO WE HAVE DECIDED TO TAKE IT DOWN TO THE POLICE STATION.

+ GPP = GUNMA PREFECTURAL POLICE



WHAT'S HE DOING IN GUNMA AT THIS HOUR ?

CLICK ...



HE'S ENCOURAGED DOC TO GET INVOLVED IN A CASE ...



IT'S PROBABLY KUDO AGAIN ...



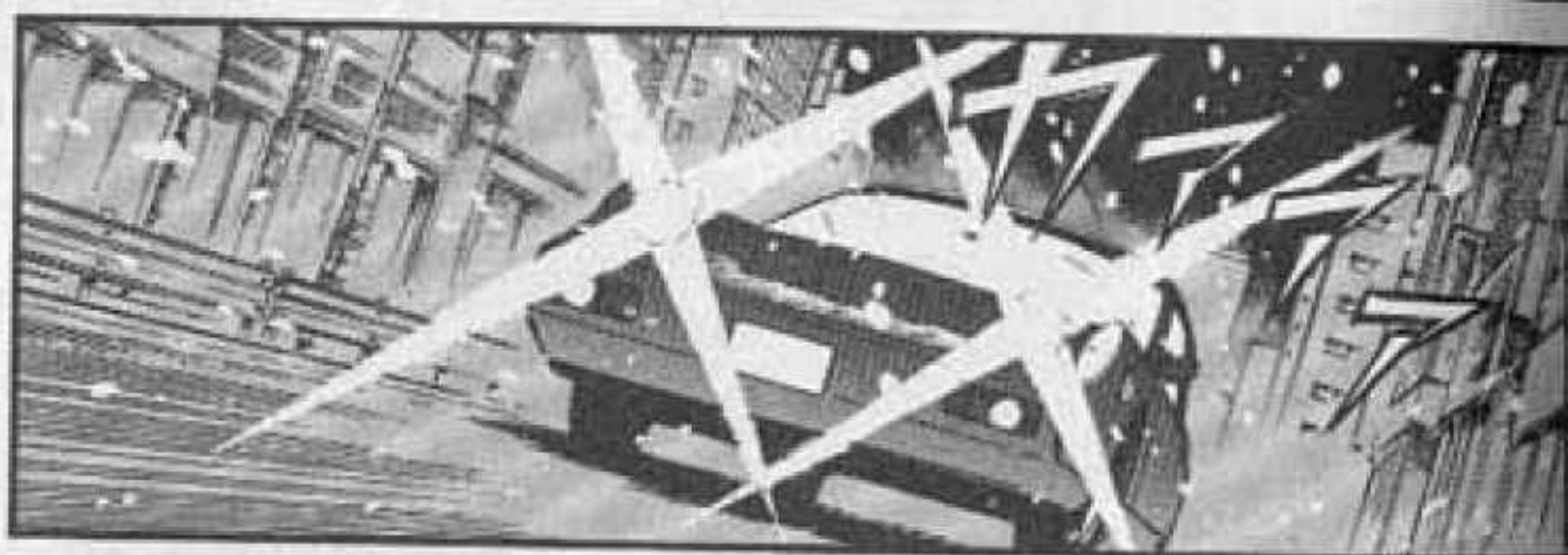
A SPARE PAIR OF TRACING GLASSES ...



WHAT'S SO FUN ABOUT BEING A DETECTIVE ...?



CUTTING EVEN THE SLEEPING TIME TO DIG UP PEOPLE'S DIRT...





WE'LL
KILL HIM IN
THE KENBASHI
STATION AS WE
PLANNED
...

ITAKURA WAS TO BE
ELIMINATED TO BEGIN
WITH WHEN THE
BUSINESS WAS OVER
...



KENBASHI
STATION IS
JUST FEW
KILOMETERS
AWAY FROM
HERE...

WE ARE
ALMOST
THERE, YOU
TWO
...



YES
...

HEY,
SHINICHI,
ARE WE
REALLY
GOING
THERE
?



E,
EXCUSE
US...

HEY, I DON'T KNOW
WHAT IT IS BUT WILL
YOU STOP WHISPER-
ING IN MY CAR ?



AS SOON AS
I GET SOMETHING
DONE ...



W, WE
LIVE VERY
CLOSE
TO THE
STATION
...

BUT ISN'T IT
STILL UNDER
CONSTRUCTION?
SHOULDN'T
THERE BE ANY
TRAIN IN
SERVICE ?



I'LL
THROW
IT OUT
...

[TUDD]
...

SORRY
...



NO !
I TOLD YOU,
DON'T
SMOKE !

OH,
RIGHT
...



AH
...

THAT'S WHY
YOU HAVE
AN ASHTRAY
...

OH NO! YOU
MUSTN'T
THROW IT OUT
FROM THE
WINDOW!

CRKK



THIS WAS
WELL
EXPECTED
...



YOU MAY BE RICH
BUT THIS ISN'T THE
WAY TO
...



WHAT THE? THE
COINS ARE ALL
COVERED IN ASHES
!



SINCE THOSE TWO ARE THE JEWELRY ROBBERS ...

THE COINS ARE IN THE ASHTRAY BECAUSE THE REAL OWNER OF THIS CAR, A NON-SMOKER, WANTED TO MAKE IT EASY TO PAY AT THE TOLLBOOTH.

THIS CAR WAS PROBABLY STOLEN FROM A PERSON WHO DROVE BY IN THE MOUNTAIN IN GUNMA AFTER THEY DITCHED THEIR RUN-AWAY CAR ...

WHAT !?

WH,

I HAVE OTHER EVIDENCE TO PROVE THAT THIS CAR ISN'T HIS ...

SILLY... I PUT THE CHANGE IN THERE BECAUSE I WANTED HIM TO STOP SMOKING ...

THIS ROBBER DIDN'T REALIZE IT UNTIL AFTER HE USED THE ASHTRAY FOR THE FIRST TIME. HE KEPT USING IT SINCE THE COINS WERE ALREADY COVERED IN ASHES ...

UNTIL WE GOT ON THE CAR ...



AT FIRST I WONDERED WHY YOU LET US GET ON THE CAR FROM THE STREET SIDE WHEN IT WAS EASIER TO JUST OPEN THE DOOR ON THE LEFT. I KNOW WHY AFTER ...

I LISTENED TO DETECTIVE YAMAMURA'S STORY ...

NOT ONLY THAT, HE SWITCHED ON THE WIPER INSTEAD OF THE TURN SIGNAL WHEN HE WAS TURNING A CURVE, FORGETTING THAT THOSE LEVERS ARE ON THE OPPOSITE SIDES FOR IMPORTED AUTOMOBILES!

BECAUSE HE ISN'T USED THE LEFT-HAND STEERING, THE CAR WAS RUNNING ALMOST ON THE CENTERLINE OF THE ROAD WITH ONLY THE DRIVER'S SEAT IN NORMAL PLACE. WHEN HE LOOKED BACK, HE TURNED BACK LEFT EVEN THOUGH IT IS HARDER TO SEE. HE ALSO HAD TROUBLE TO CHANGE SHIFT WITH THE LEFT HAND!

B, BUT WHY DID THEY LET US GET ON THE CAR ...?

OF COURSE, NORMAL CAR THIEVES WOULD NEVER WANT HITCHHIKERS. HOWEVER ...

THAT INJURED ROBBER IS PROBABLY IN THE TRUNK RIGHT NOW. HE'S HIDING THERE TO PASS THROUGH THE CHECKPOINTS!

THE BLOOD OF THE OTHER ROBBER WHO HAS BEEN SHOT. HE PROBABLY HAD SAT ON THE SEAT EARLIER!

THE SEAT THIS LADY IS SITTING ON HIDING ...

THE ONLY ONES THAT WOULD DO SUCH THING ON A STOLEN CAR ARE ...

THAT'S WHY I REALIZED WHO THEY REALLY ARE !

THEY DIDN'T MIND US BECAUSE THEY NEEDED TO PASS THROUGH THE CHECKPOINTS! IF AN OLD MAN AND A CHILD WERE WITH THEM, THE POLICE WOULD THINK THEY ARE A FAMILY ON TRIP.

THE JEWELRY ROBBERS THAT ARE ON THE RUN RIGHT NOW !!!

YOU HAVE
TO KEEP US
COMPANIES
FOR A BIT
LONGER
...

WHAT CAN WE
DO NOW THAT
YOU KNOW
?

AREN'T
YOU SMART,
BOY?

I'M IM-
PRESSED
...



HEY,
SHINICHI
...



SHINICHI
!?

