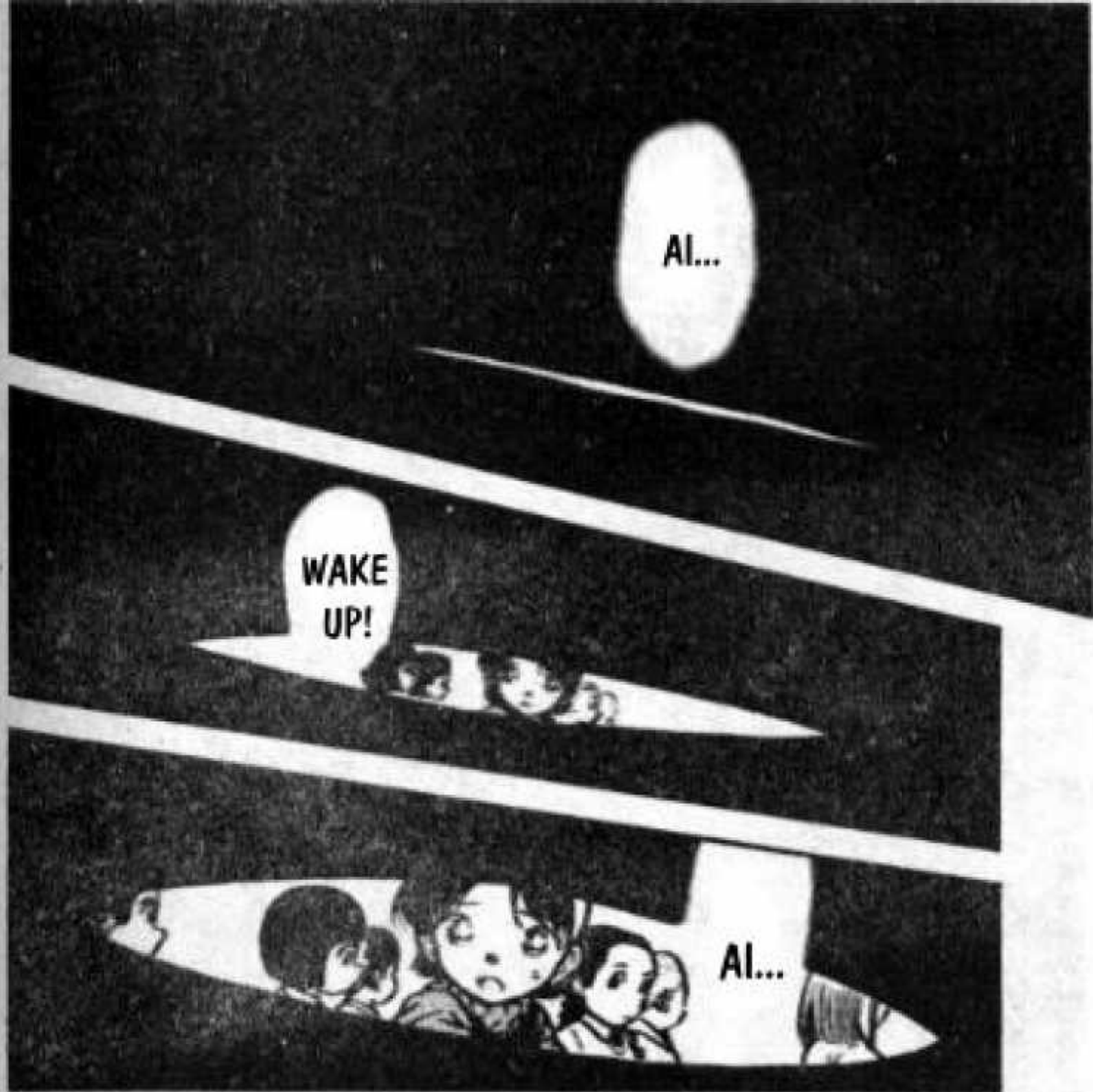


FILE.10

THE BULLET FROM THE PAST







WE ONLY SAW THEM ON THE STREET, I'M MAKING TOO MUCH OF IT...

HA...YES ...IT WAS A DREAM...



A DREAM?

I THINK YOU SHOULD GO REST IN THE HEALTH OFFICE...

IS IT BECAUSE YOU HAVE A COLD?



COULD IT BE BECAUSE I'M TOO TIRED?

I'VE BEEN DREAMING LIKE THIS, RECENTLY ...



Ai...



Ai!

WHO'S CALLING ME?

Ai!



HEY, AI, ANSWER ME!

HUH? WHO IS IT?





SOMEONE USED DRUGS TO MAKE ME PASS OUT, THEN BROUGHT ME TO THIS WINE CELLAR ...

COULD IT HAVE BEEN...



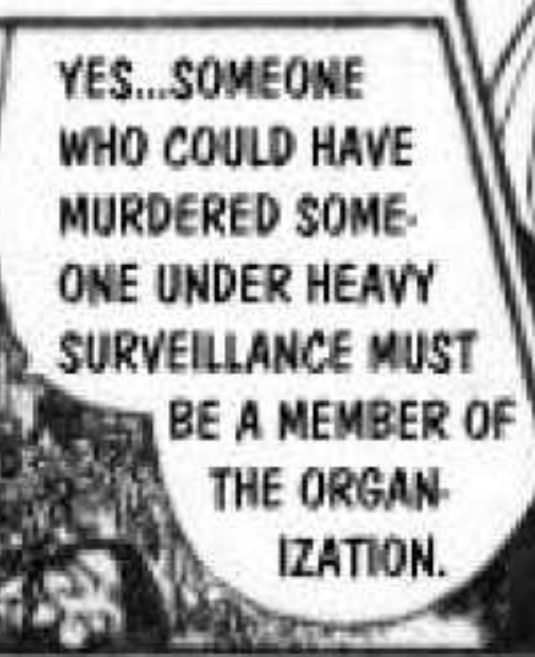
WHAT DID YOU SAY WAS BEHIND YOU?



!?



BISIK!



YES...SOMEONE WHO COULD HAVE MURDERED SOMEONE UNDER HEAVY SURVEILLANCE MUST BE A MEMBER OF THE ORGANIZATION.



THERE'S NO ONE NEXT TO ME... THE DOOR'S LOCKED...

COULD THAT PERSON STILL BE NEXT TO YOU?



WHAT DID YOU SAY?

AH,



OKAY...NOW YOU HAVE TO THINK OF A WAY TO ESCAPE FROM THAT WINE CELLAR.



YES...HE HAVE HAVE DRUGGED ME TO MAKE ME PASS OUT, THEN BROUGHT ME TO THE BATHROOM AND PUT ME IN A BOX THAT WAS PREPARED EARLIER. THEN HE CHANGED INTO A JANITOR'S UNIFORM AND BROUGHT ME HERE...



JANITOR'S UNIFORM?

ALL THERE'S LEFT IS A JANITOR'S UNIFORM+ A BOX...

THE DRUG THAT TURNED US INTO KIDS, APTX 4869... IT HAS THE POWER TO CAUSE THE VICTIM'S BODY TO KILL ITSELF. WE DEPEND ON OUR ABILITY TO CONTROL CELL PRODUCTION TO SURVIVE...

OKAY, KUDO, LISTEN CAREFULLY...

LISTEN TO ME!

DON'T SPEAK ANYMORE! IF YOU'RE TALKING ABOUT WHETHER YOU CAN ESCAPE, NO MATTER WHAT YOU SAY...

SO IF WE INCREASE THE SPEED AT WHICH CELLS MULTIPLY

HEY, WHAT ARE YOU SAYING?

I CAN NEVER SPEAK WITH YOU FACE TO FACE AGAIN

I CAN NEVER

HUH!?

TO KEEP THEIR SECRET, THEY'LL KILL ALL OF YOU

THIS WAY, YOU, THE PROFESSOR AND EVERYONE CONNECTED TO ME...

EVEN IF I DO ESCAPE, THEY'LL FIND ME AGAIN SOON...

DON'T YOU UNDERSTAND? THEY COULD FIND AND CAPTURE ME EVEN WHEN I'M IN CHILD-FORM.

WHAT?

Al...

SO NOW YOU
HAVE TO
REMEMBER
EVERYTHING I
TELL YOU ABOUT
THE DRUG...

I WILL
NEVER SEE
ANY OF YOU
AGAIN...

SO IT
DOESN'T
MATTER IF
I AM KILLED
OR I ESCAPE
FROM
HERE...

WHAT?

~HUA~
~HUA~

YOU ARE
NOT TIED
UP?

YEAH, HE
WAS
CHECKING
UP INFO.
ON ME
.....

THEY PROBABLY
USED THEIR
POCKET MO, LINKED
CELL PHONE TO THE SOCIETY'S
CONNECTED MAIN COMPUTER,
TO FIND OUT
ABOUT
US...

OH, IT'S THE
GAME MITSUHIKO
GAVE ME TO
GIVE BACK TO
THE PRO-
FESSOR
....

WHAT'S
THAT
SOUND?

YEAH
....

~HUA~

WHEN I
COULDN'T
FIND YOU,
I CALLED
INSPECTOR
MEGURE
.....

WHAT?

THEY'RE
ALREADY
BACK IN
THE HOTEL
.....

BEFORE
THEY GET
BACK,
REMEMBER
WHAT I
TELL YOU
....

THAT'S WHY I TOLD
YOU TO BE FASTER!
THEY'RE NOT GOING
TO LEAVE ME
HERE ALONE FOR
LONG
.....

THAT MEANS THE PERSON WHO CAUGHT YOU HAD TO LEAVE THE HOTEL IN A HURRY, BUT HE WAS STOPPED BY THE POLICE, WHO NEEDED SUSPECTS TO STAY FOR THE INVESTIGATION!

THE POWER SOURCE OF THE COMPUTER YOU'RE USING HAVEN'T BEEN CUT OFF...

I USED KUDO'S VOICE TO CALL HIM!

NONE OF THE SEVEN PEOPLE WHO HAD PURPLE HANDKERCHIEFS CAN LEAVE THE HOTEL....

YOU'VE BEEN GONE FOR AN HOUR, BUT YOU HAVEN'T SEEN ANY OF HIS PARTNERS AROUND, BECAUSE HE CAN'T CONTACT THEM!

IN ADDITION, THAT PERSON MIGHT NOT HAVE CONTACT WITH THE OUTSIDE WORLD!

YEAH, PROBABLY! IF YOU CAN FIND EVIDENCE THAT PROVES BISIK IS THE MURDERER AND GIVE IT TO THE POLICE BEFORE HIS PARTNERS ARRIVE, YOU CAN GET OUT SAFELY!

SO, I'M STILL INSIDE THE HOTEL?

AND HE'S THE ONE CALLED BISIK!

THAT MEANS, ONE OF THE SEVEN PEOPLE WITH THE PURPLE HANDKERCHIEF IS THE MURDERER AND THE ONE WHO CAPTURED YOU...

IDIOT, DIDN'T I TELL YOU? EVERYONE CONNECTED TO ME WILL BE ELIMINATED... WHAT WILL HAPPEN TO THE EMPLOYEE WHO RESCUES ME...

IF I TELL THEM THAT A GIRL IS TRAPPED THERE, THEY'LL...

NOW, I'LL ASK A HOTEL EMPLOYEE WHERE THEY HAVE A RARELY USED WINE CELLER!

THE POLICE CAN ONLY HOLD BISIK FOR AN HOUR WITHOUT PROOF...

NO, IT'S IMPOSSIBLE...
MY BODY IS TOO
SMALL NOW TO
REACH BOTH
SIDES OF THE
FIREPLACE
.....

CAN
YOU
CLIMB
UP
IT?

THERE'S NO WAY
OUT OF HERE,
THERE'S ONLY A
FIREPLACE...

I'LL FIND
OUT
WHICH
OF THE
SEVEN
IS BISIK
.....

THEN
FIND A
WAY TO
GET OUT
BY YOUR-
SELF!

IS THERE
WHITE
SPIRIT
THERE?*

YEAH, IT'S OLD AND
HAS AN OLD STYLE
FIREPLACE THAT
DOESN'T SEEM TO
BE IN WORKING
CONDITION

DIDN'T
YOU SAY
YOU'RE IN
A WINE
CELLER?

*WHAT CONAN DRANK TO TURN BACK INTO SHINICHI ONCE

BUT WHAT
DO YOU
NEED IT
FOR?

HERE'S
WHITE
SPIRIT
.....

YEAH...
CHINESE
SPIRIT...

WHITE
SPIRIT
?

YOU'LL USE
IT LIKE
MAGIC!

YOU ARE
GOING TO
USE IT TO
ESCAPE
FROM THAT
ROOM...



WE HAVE RULES...

NOT ONLY ARE WE NOT ALLOWED TO LEAVE, WE CAN'T EVEN MAKE ANY PHONE CALLS...

WE'VE ALREADY TOLD OUR SIDE OF THE STORY AND STILL CAN'T LEAVE.



WHAT IS GOING ON?



MR. MAICHAN PLEASE COME IN NEXT!

IN ADDITION, THESE PEOPLE ARE STILL AT THE SCENE OF THE CRIME, BEING INVESTIGATED, WE STILL DON'T KNOW WHO'S RESPONSIBLE...

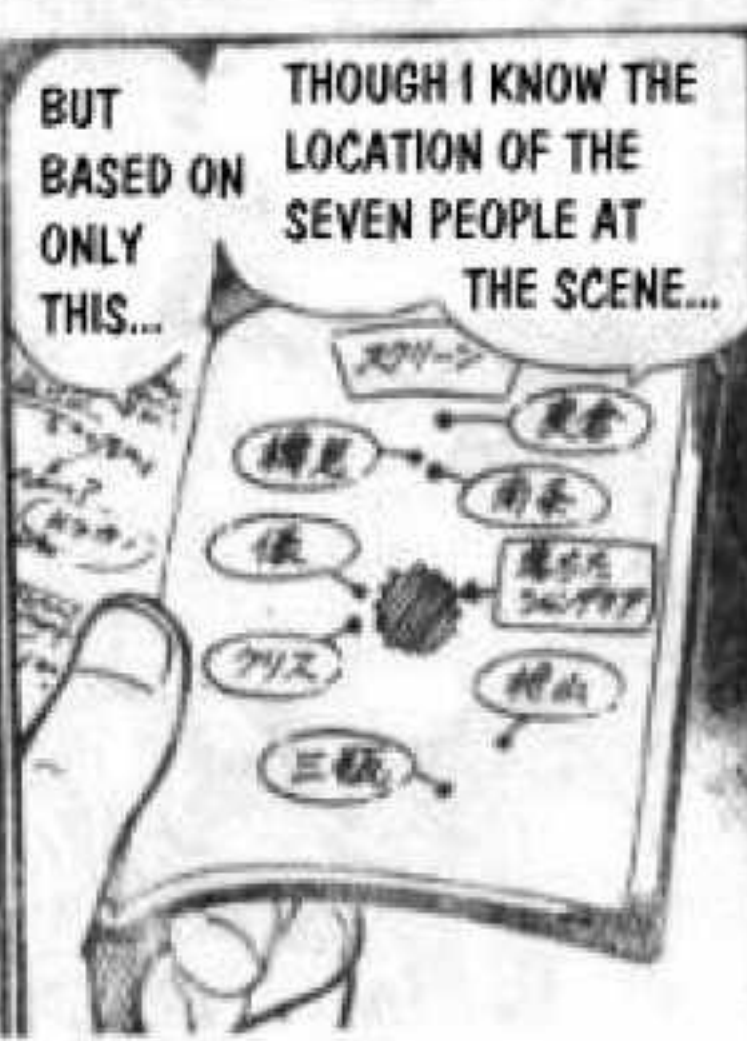


THIS IS THE SCENE AFTER THE INCIDENT!



HUH ?

DO YOU KNOW HOW TO SPELL 'POIROT'?



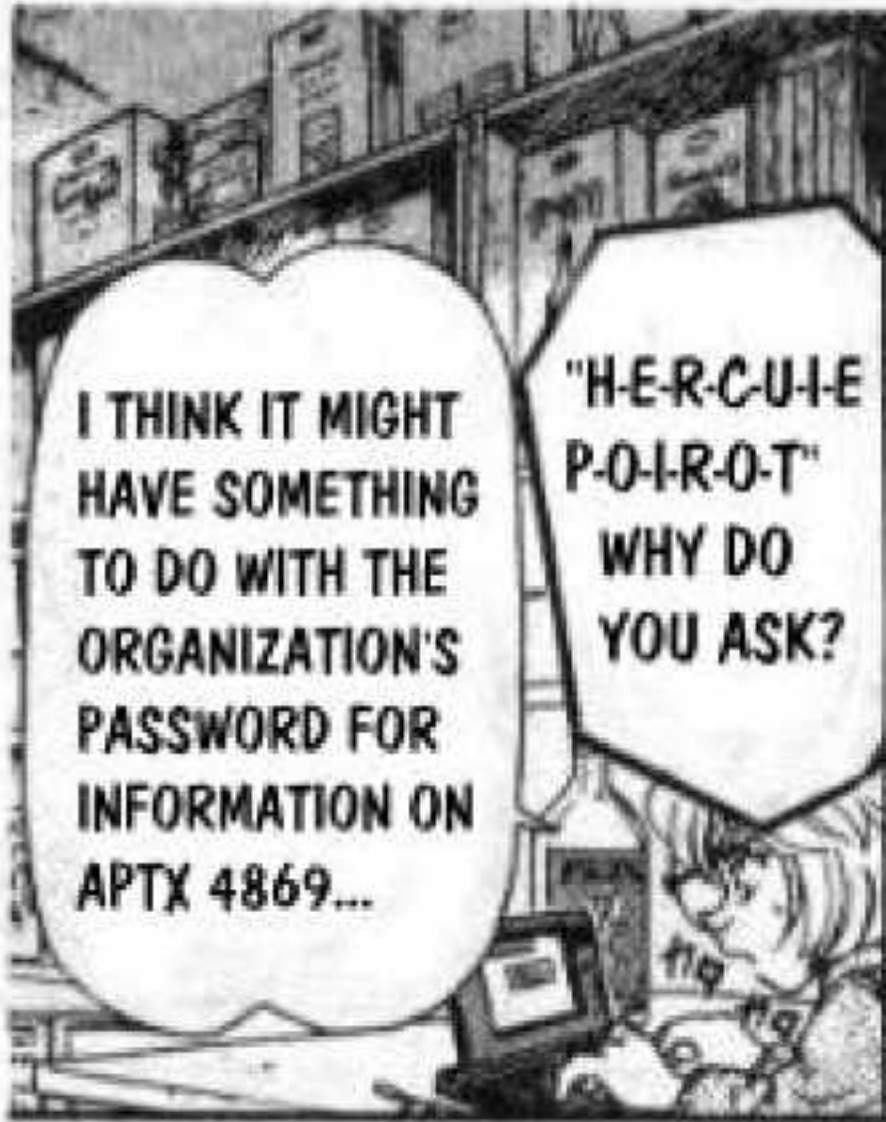
BUT BASED ON ONLY THIS...

THOUGH I KNOW THE LOCATION OF THE SEVEN PEOPLE AT THE SCENE...



DAMN

THAT WAS OUR LIVE COVERAGE...



I THINK IT MIGHT HAVE SOMETHING TO DO WITH THE ORGANIZATION'S PASSWORD FOR INFORMATION ON APTX 4869...

"H-E-R-C-U-I-E P-O-I-R-O-T" WHY DO YOU ASK?



HOW DO YOU SPELL "POIROT" ...

YEAH, I DON'T KNOW WHY, BUT I FEEL A LITTLE UNCOMFORTABLE

HEY, DID YOU DRINK THE WHITE SPIRIT?



WHICH SOUNDS LIKE "GOOD-FOR-NOTHING DETECTIVE"

ACCORDING TO THE WAY YOU PRONOUNCE 4869...



YOU MEAN "POIROT" IS A CLUE? WHAT'S THIS ABOUT?

NO... "POIROT" ISN'T THE PASSWORD ...



IT MAY NOT BE THAT EASY...

SO, THE PASSWORD MAY BE THE NAME OF A DETECTIVE...



IN ITS EXPERIMENTAL STAGE, SOME PEOPLE CALLED THE DRUG...



OKAY, I'LL TRY IT ...

HUH? THAT'S A DETECTIVE?



IT'S SPELLED "S-H-E-L-L-I-N-G F-O-R-D..."

SHELLING FORD...



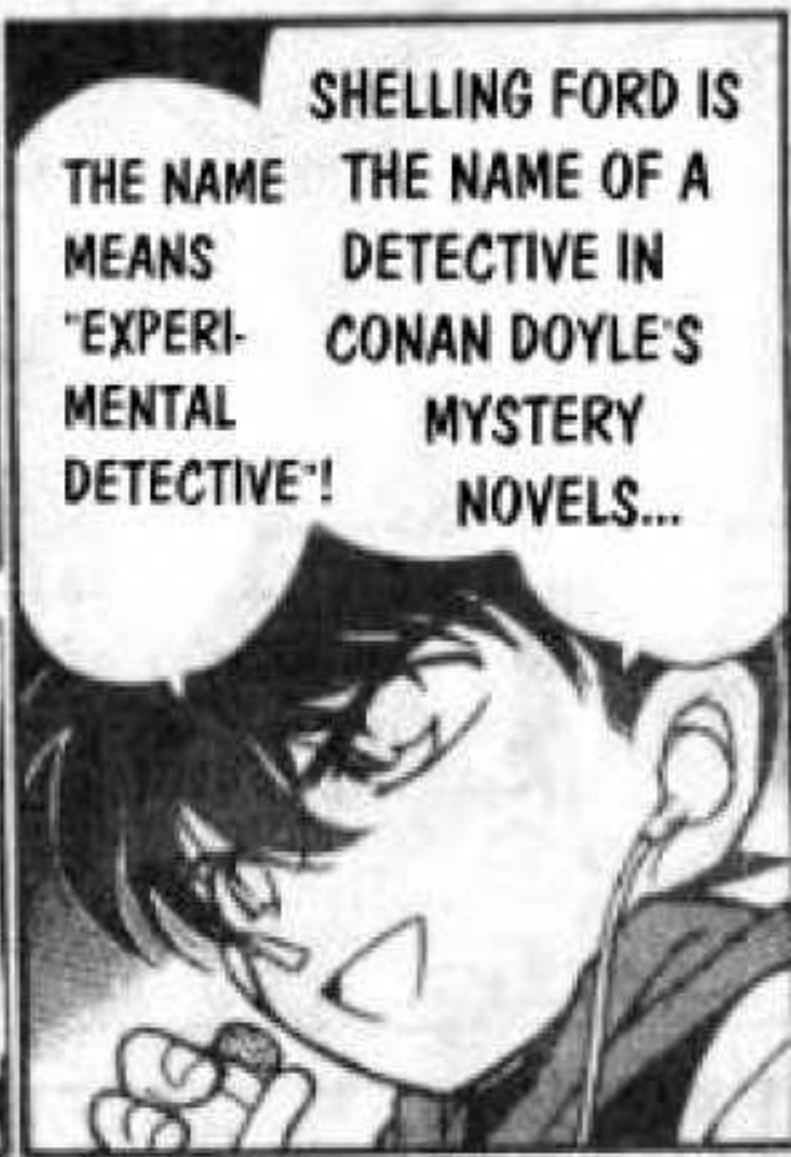
IT WORKED...WHY?

THAT'S IMPOSSIBLE...



IT'S ABOUT TIME, IS YOUR BODY CHANGING?

OH...THIS SOCIETY IS PRETTY IN STYLE SOME-TIMES...



SHELLING FORD IS THE NAME OF A DETECTIVE IN CONAN DOYLE'S MYSTERY NOVELS...
THE NAME MEANS "EXPERIMENTAL DETECTIVE"!



NOW, I'LL MAKE A COPY OF INFO ON THE DRUG AND HIDE IT IN THIS HOTEL, YOU HAVE TO COME GET IT LATER...

I CAN'T SAY "NO" COMPLETELY, I HAD A COLD BEFORE, NOW AFTER DRINKING SPIRIT...



HUH?



SHINI-CHI! LOOK!

HEY, HEY...

AFTER THE ORGANIZATION DISPOSES OF MY BODY...

NO, THAT'S NOT IT! IF THE INSPECTOR RELEASES THOSE 7 PEOPLE, HE'LL CALL ME FIRST...

IT'S THEM! DID BISIK FINALLY MAKE CONTACT WITH THEM?

YEAH! THEY COULDN'T CALL BISIK, SO THEY HAD TO USE THE TRACER.

CAN IT BE THAT THE COMPUTER AI IS USING HAS A TRACER ON IT...



AI!



AI, WHAT'S WRONG?

HIDE IN THE FIRE-PLACE!



HEY, AI, YOU'RE IN TROUBLE! THEY'RE HERE!

DON'T
ASK, GO
QUICKLY!

HUH?
WHERE
ARE YOU
NOW?

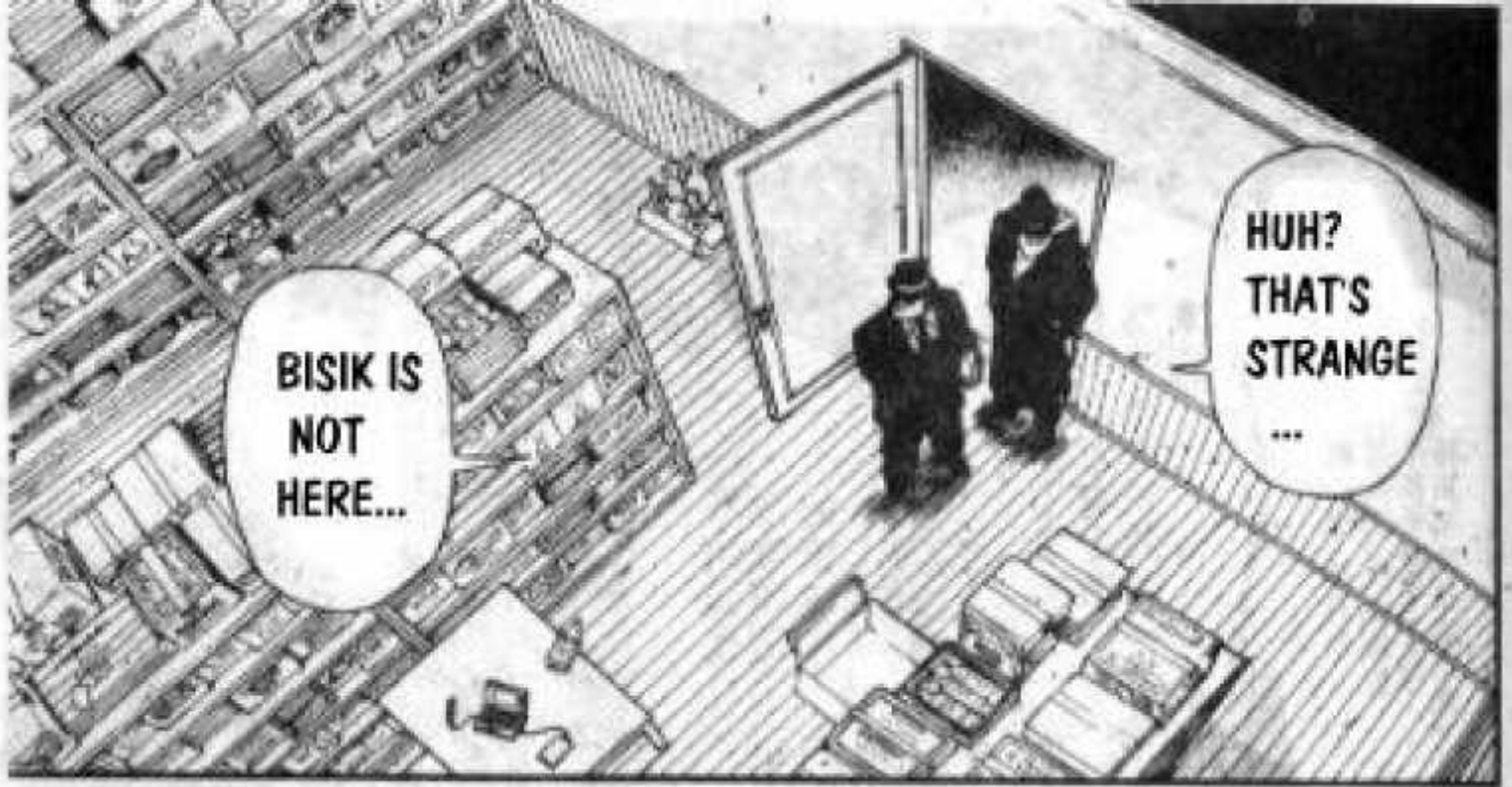
INSPECTOR!
THIS IS KUDO!
GO STOP THE
TWO BLACK
MEN ENTERING
THE HOTEL!

-DIALING-

BUT, INSPECTOR,
THE MEDIA IS
CROWDED AROUND
THE ENTRANCE,
I DON'T KNOW
WHO THEY ARE

HUH?
BLACK
MEN?





BISIK IS NOT HERE...

HUH? THAT'S STRANGE ...

HE WOULD HIDE THE BODY HERE... IF HE FAILED TO KILL THE MAN AT THE ASSEMBLY HALL, MAYBE THIS IS HIS ROUTE OF RETREAT!

WE TRACED HIS COMPUTER TO THIS WINE CELLAR, BUT HE'S NOT HERE... HE TOLD US TO MEET HIM IN THE PARKING LOT 30 MINUTES LATER...



YEAH, I THINK SO TOO ...



GIN, I THINK WE SHOULD LEAVE THIS HOTEL AS SOON AS POSSIBLE...



...



YES...

THEN, YOUR CLOTHES ...



YES ...

DID THEY LEAVE?



AI?

DON'T WORRY,
IT'S ONLY
TEMPORARY!
YOU HAVE
TO CLIMB UP
THE FIREPLACE
BEFORE YOU
CHANGE
BACK!

BUT, IT'S
STRANGE...
DOES THE SPIRIT
HAVE AN AGENT
THAT ALLOWS
CELLS TO GROW
QUICKLY?

AND I'M
CARRYING
INFO.
ON THE
DRUG!

A
JANITOR'S
UNIFORM
....

I'VE
ALREADY
CHANGED
INTO...

I'M SO
TIRED
...

I THINK I'M
CLIMBING
UP TO A
ROOF...

LOOK, THE
INTERNET
HAS INFO
ON TO-
MORROW'S
NEWS!

NO, NO YET.
OUR SOURCE OF
INFO IS SLOW.

DO YOU
KNOW
WHO'S
BISIK
YET?

!?

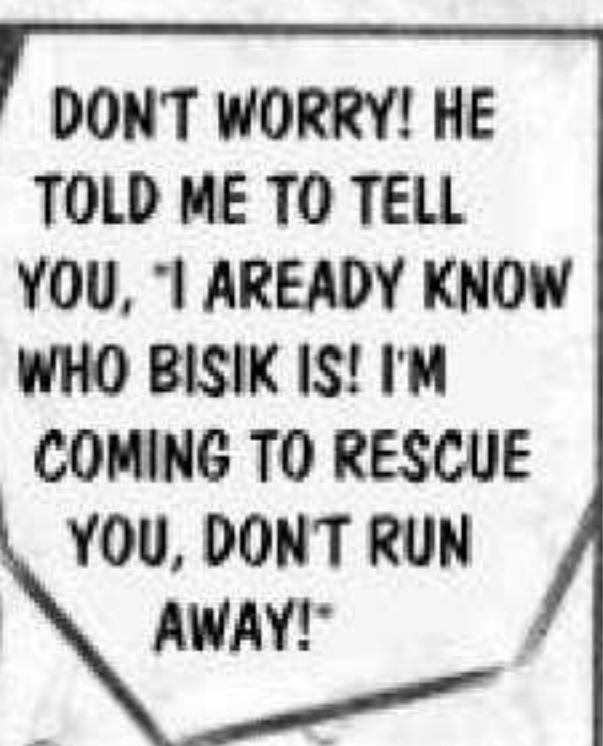
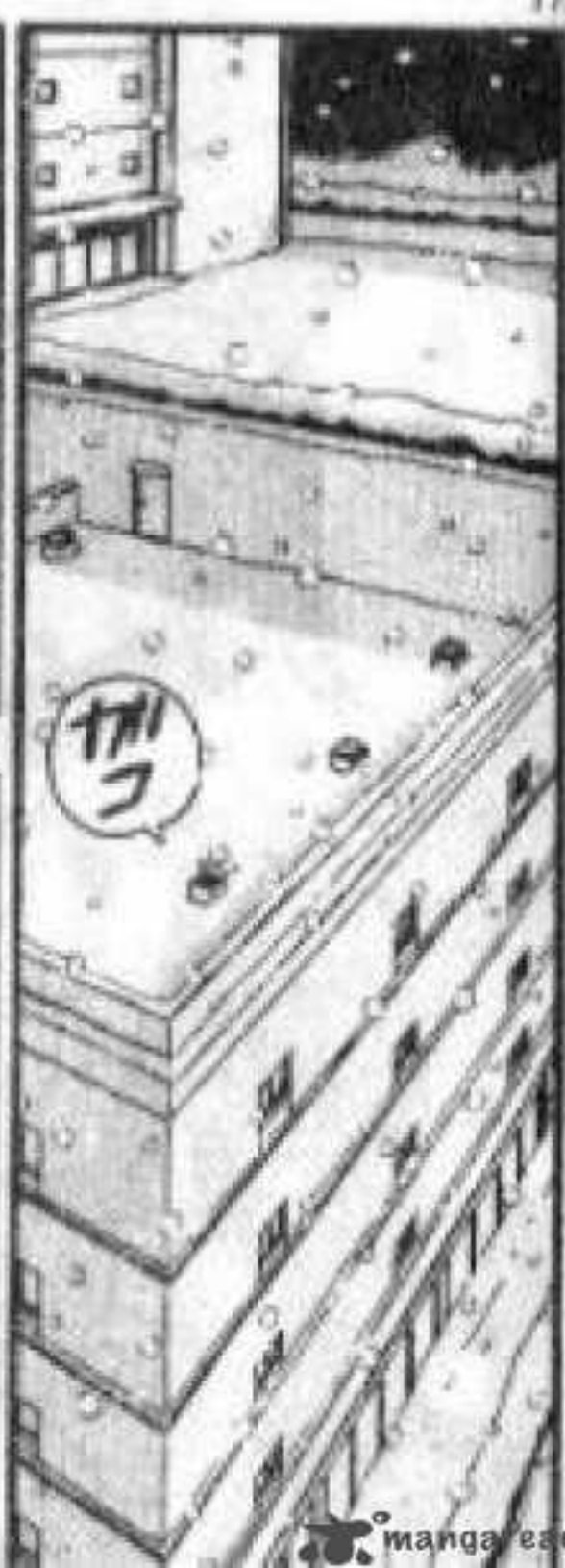
ついに熱愛発覚!?



AN UN-
KNOWN
LOVE?

I SAW
THIS
ALEADY,
IT'S NOT
IMPORT-
ANT...







SHERRY
.....!

I WAS
DYING
TO SEE
YOU...